



# Harstad Fine Arts Series Season 2024-2025

# HORIZONS

Faith Lutheran Church  
1000 Bates Creek Rd.  
Lexington KY 40502

# THE HARSTAD FINE ARTS SERIES

The Harstad Fine Arts Series Inc. (HFAS) is named after Faith Lutheran's late Associate in Ministry for Worship, Bonnie Harstad, and is a continuation of her vision to bring the arts to our community.

Established in December 2015 by the congregational council of Faith Lutheran Church, ELCA, HFAS is an independent, non-profit entity striving to serve the community by offering outstanding concerts and exhibitions, always free to the public.

HFAS also provides an annual student scholarship, helping expand young artists' education through programs outside of their normal study.

## OUR VISION STATEMENT

*Building Community Through Free And Public Offerings Of The Arts*

## BOARD OF DIRECTORS

Kerstin Wendroth (president), Doug Hahn (vice president), Carol Davis (treasurer), Matthew West (secretary), Yvonne Centers, Kathy Egner, Scott Gralheer, Elsbeth Johnson, Pastor Dana Lockhart, and Judy Page

## WE NEED YOUR SUPPORT

Since all of our events are always presented to the public free of charge, HFAS relies on the contributions of individual donors to provide high quality concerts and visual arts exhibits. Your tax-deductible donation not only supports the performing artists but also our scholarship for young artists and funds our commitment to outreach, such as the world renowned artists meeting with students at local schools or giving masterclasses.

You can donate by sending a check to **HFAS, 1000 Tates Creek Rd. Lexington KY 40502** or go to the HFAS website to donate online.

THANK YOU!

# GREETINGS

With great enthusiasm and joyful anticipation we present the 2024-2025 season program of the Harstad Fine Arts Series!

The theme of our 9th season is HORIZONS. Far too rarely do we accomplish looking beyond our immediate surroundings, to the horizon, where the earth meets the sky. This season's eclectic offerings invite you to join us in passionately enjoying familiar music styles, but also exploring exciting new sounds such as Ben Sollee's unique cello technique or Steven Rickards' counter-tenor vocals.

HORIZONS also represents diversity from classical to jazz and visual arts, well-known artists and discoveries of up-and-coming artists who long to transcend boundaries through their art. This season also aims to dissolve boundaries by bringing all ages together to enjoy the arts. Make sure you bring your children to the Concert for Kids, by pianist Dominic Cheli. They will have a blast!

When we use our imagination and look beyond the horizons, art is able to touch our emotions, to surprise, relax or energize us. First and foremost, it is able to connect us! I believe that music brings people together because they listen to each other instead of talking against each other. We can't wait to be together again. Enjoy perusing the program and remember to register on our website ([harstadarts.com](https://harstadarts.com)) for your free tickets.



A warm welcome to the 2024-2025 HFAS season!

*Kerstin Wendroth*

President

SUNDAY SEPTEMBER 15, 2024

3:00 PM

---

SEASON 2024-2025 OPENING CONCERT

## BEN SOLLEE - IT'S BEEN A LONG HAUL

---

Kentucky musician and composer Ben Sollee has been blurring boundaries with his musical style and career for nearly two decades. In this concert you will get to hear old favorites and new songs from his latest album *Long Haul* that just was released a few weeks ago. Drawing on tonal influences from the American and global south, Sollee's vocals and unique cello style thread through each song binding seemingly disparate chapters of his journey – the Long Haul.

**Sollee works to grow togetherness through events, multi-media productions, and educational workshops that address loneliness, improve wellness, and nurture creativity.**

*"There is an urgent need to bring humans together as the world faces a changing climate, limited food and water resources, and technological disruptions. And while data can inform governments and corporations, it is the arts that will move people to action."* -Ben Sollee



Ben is a 2002 graduate of Lafayette High School in Lexington where he attended the SCAPA program.





ART EXHIBIT: **OCTOBER 6 - DECEMBER 6, 2024**

ARTIST RECEPTION: SUNDAY **OCTOBER 13, 3-6 PM**

---

## **ECLECTIC EXPRESSIONS: A SHOWCASE OF DIVERSE ARTISTIC INSPIRATIONS**

---

**Art Work by Debbie Blair, Enrique Gonzalez,  
Christopher Huestis, and Hope Soch**





SATURDAY **NOVEMBER 2, 2024**

**2:00 PM**

---

## **PIANO CONCERT FOR KIDS**

### **FROM BEETHOVEN TO STAR WARS**

**DOMINIC CHELI** PIANO

---

World-class pianist and educator Dominic Cheli from Los Angeles, CA, presents this concert to share the joy of music with students as young as kindergarten or at the high-school level!



If you always wanted to take your kids to a classical music concert so that they can get to know the beauty of this music but you were afraid they wouldn't sit still, this concert is for you!

In this concert Dominic will share wonderful classical music masterpieces and how they influenced many of the movies and soundtrack that we love today.

Committed to engaging with his surrounding community, Dominic regularly performs and brings curated programs/educational residencies to schools and retirement homes. Dominic has received degrees from the Manhattan School of Music and Yale University, and was recently appointed faculty member of the Colburn Community Music School, a performing arts school in Los Angeles.

In his spare time, Dominic enjoys cooking and training for Ironman triathlons.



SUNDAY **NOVEMBER 3, 2024**

**3:00 PM**

---

## **DEDICATIONS TO THE HUMAN SPIRIT**

### **DOMINIC CHELI, PIANO**

---

Each one of the pieces that you will hear shows the profound human connection held between the composers and the friends, colleagues, and individuals they admired.

A native of St. Louis and now based in Los Angeles, Dominic has performed with orchestras all across the country and abroad including the San Diego Symphony, Sarasota Orchestra, Indianapolis Symphony, Columbus Symphony, Princeton Symphony, Colburn Orchestra, Virginia Symphony, Adrian Symphony, and the Nordwestdeutsche Philharmonie (Germany). His rapidly advancing career included his Walt Disney Concert Hall Debut with the Colburn Orchestra where Dominic was “mesmerizing, (he) transfixed the audience.” (LA Times). He gave his Carnegie Hall Recital Debut in 2019 and has had a busy performing and recording career ever since.

#### **PROGRAM**

Schulhoff: Suite No.3 for the Left Hand

H. Leslie Adams: Etude in A-flat Minor from Book 2 no.2

Beethoven/Cheli: An Die Hoffnung

Clara Schumann: Romanze in A minor

Brahms: Intermezzo in A major

Liszt/Schubert: Soirees de Vienne no.6 (Sophie Menter Version)

-Intermission-

Mussorgsky: Pictures at an Exhibition

## DOMINIC CHELI



Photo Credit: Hallee René

Dominic will lead a piano masterclass on Saturday, November 2 at 4:00 PM. More information to come.

SUNDAY **JANUARY 26, 2025**

**3:00 PM**

---

## **RIISING ARTISTS**

### **WINNERS OF THE HARSTAD SCHOLARSHIP FOR YOUNG ARTISTS**

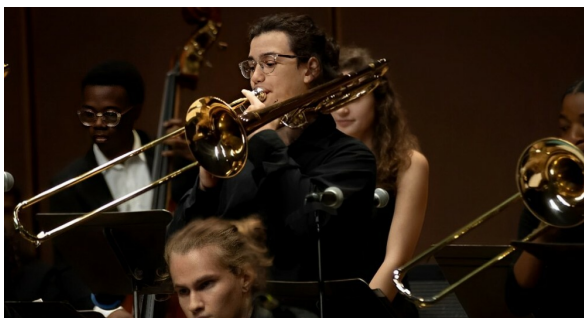
**ELISABETH HOWARD** DANCE

**HANNAH KANG** VIOLA

**BONNIE SPECK** DANCE

**CKYO JAZZ ARTS ORCHESTRA** CONDUCTOR RALEIGH DAILEY

---



The CKYO Jazz Arts Orchestra is a division of the Central Kentucky Youth Orchestras.

SUNDAY MARCH 30, 2025

3:00 PM

---

## THE TIME IS NOW: A PRESENTATION OF SONGS ABOUT INCLUSIVITY

**KAYLA WILSON** SOPRANO

**AUDRIANNA HUGHES** MEZZO SOPRANO

**PHAREL SILABAN** TENOR

**ROBERT BOSWORTH** PIANO

---

Immerse yourself in a musical journey celebrating the beauty of inclusiveness with "The Time is Now". This recital transcends boundaries, weaving together melodies from diverse cultures and genres, creating a symphony of acceptance. Each note resonates with the power of unity, inviting listeners to embrace the richness that comes from embracing our differences. Join us for an afternoon where music becomes a universal language, fostering connections that go beyond any barriers. "The Time is Now" is not just a recital; it's a celebration of the extraordinary tapestry of humanity.

**Kayla** and **Audrianna** are Master's students for Vocal Performance at the University of Kentucky. **Pharel** received a Master of Music in Voice Performance from the Eastman School of Music after completing a Graduate Diploma in Voice Performance at the Royal College of Music. He is currently pursuing a Doctorate in Musical Arts in Voice Performance at the University of Kentucky.

**Robert Bosworth** is on the faculty of the University of Kentucky School of Music as vocal coach and piano accompanist.





**Audrianna Hughes**



**Pharel Silaban**



**Kayla Wilson**

ART EXHIBIT: **MARCH 9 - MAY 10, 2025**

ARTIST RECEPTION: SUNDAY **MARCH 16, 3-6 PM**

---

## KITH AND KIN

---

Lexington artist **Kathy Rees Johnson** presents an exhibit of her artwork featuring favorite places and kin.



SUNDAY **APRIL 27, 2025**

**3:00 PM**

---

## **THE IMMORTAL SHAKESPEARE**

PRESENTED BY **ECHOING AIR**

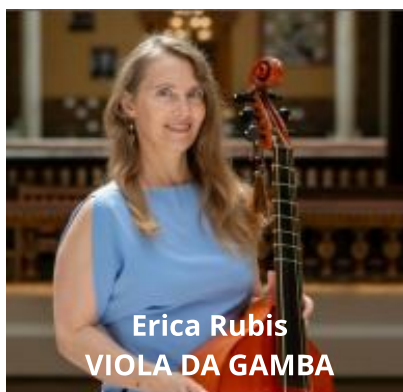
---

In this concert, Echoing Air will explore the enduring nature of Shakespeare's genius in word and song from the Elizabethan Age to the present. Featured selections include songs from the plays themselves, as well as popular music of Shakespeare's time referenced in his plays.

The program includes lute songs by Thomas Morley and Robert Johnson, Baroque settings by Henry Purcell and Pelham Humfrey, Classical songs by Thomas Arne, and modern settings of Shakespearean texts by Michael Tippett and John Gardner.







The day before the concert, on April 26 at 3:00 PM, the ensemble will perform a vocal masterclass for young solo singers. More information to come.



# TICKET INFORMATION

**Admission to ALL events is free.** Due to limited seating in the intimate and beautiful setting of Faith Lutheran Church, HFAS asks that you obtain a free ticket through Eventbrite to reserve your seat for all events except the artist receptions. Ticket links can be found on the HFAS website ([harstadarts.com](http://harstadarts.com)) and in HFAS email newsletters.

## EMAIL NEWSLETTER

The HFAS email newsletter informs about the latest updates on our shows and includes ticket links. If you have not received it in the past and want to sign up, email [\*\*president@harstadarts.com\*\*](mailto:president@harstadarts.com)

## HFAS SCHOLARSHIP FOR YOUNG ARTISTS

One of the missions of the Harstad Fine Arts Series is to support and encourage young artists in their areas of study.

The HFAS has awarded thousands of dollars to talented students since its inception, helping students to attend summer music camps and festivals such as Bowdoin International Music Festival, Sewanee Summer Music Festival, Indiana University Summer String Academy, New England Music Camp, Philadelphia Ballet Summer Intensive, Atlanta Ballet Summer Intensive, and more. We are one of the only organizations in Lexington to award this level of support to these incredible developing artists to use at a program of their choosing.

**Applications for the 2025 scholarship will be available January 1, 2025. Deadline to submit the application is March 15, 2025. Visit [www.harstadarts.com](http://www.harstadarts.com) for details.**

# GRANT SUPPORT/SPONSORS



*LexArts has provided funding support for the Harstad Fine Arts Series 2024/2025 season through its annual Fund for the Arts campaign.*



*The Kentucky Arts Council, the state arts agency, provides operating support to the Harstad Fine Arts Series with state tax dollars and federal funding from the National Endowment for the Arts.*

## Mission Endowment Fund



Scott Pfeiffer & Co. Landscaping



**Businesses:** Please inquire about ads and sponsorship at [info@harstadarts.com](mailto:info@harstadarts.com).



# Harstad Fine Arts Series 2024-2025

## CONCERTS

<b><i>It's Been a Long Haul</i></b> Ben Sollee Children's Concert <b><i>Musical Adventures: From Beethoven to Star Wars</i></b> Dominic Cheli, piano	September 15, 3:00 pm November 2, 2:00 pm
<b><i>Dedications to the Human Spirit</i></b> Dominic Cheli, piano	November 3, 3:00 pm
<b><i>Rising Artists</i></b> HFAS Scholarship winners and CKYO Jazz Arts Orchestra	January 26, 3:00 pm
<b><i>The Time is Now: A Presentation of Songs about Inclusivity</i></b> UK Opera Soloists	March 30, 3:00 pm
<b><i>The Immortal Shakespeare</i></b> Baroque Ensemble Echoing Air	April 27, 3:00 pm

## ART EXHIBITS

<b><i>Eclectic Expressions: A Showcase of Diverse Artistic Inspirations</i></b> Artwork by Debbie Blair, Enrique Gonzalez, Christopher Huestis & Hope Soch	October 6 – December 6 Artist's Reception: October 13, 3-6 pm
<b><i>Kith and Kin</i></b> Artwork by Kathy Rees Johnson	March 9 - May 10 Artist's Reception: March 16, 3-6pm

A grand piano is shown in a room with a bright sunburst light effect in the background. The piano is dark and the light is a warm, golden-yellow color. The text is overlaid on the image.

Harstad Fine Arts Series

Season 2024-2025

HORIZONS

**Harstad Fine Arts Series (HFAS)**

**Faith Lutheran Church**

**1000 Tates Creek Rd.**

**Lexington KY 40502**